

Pre-Arrival Program Series:

Looking Ahead at Your First Year at York

YORK 



Land Acknowledgement

York University recognizes that many Indigenous Nations have longstanding relationships with the territories upon which York University campuses are located that precede the establishment of York University.

York University acknowledges its presence on the traditional territory of many Indigenous Nations. The area known as Tkaronto has been care taken by the Anishinabek Nation, the Haudenosaunee Confederacy, and the Huron-Wendat.

It is now home to many First Nation, Inuit and Métis communities. We acknowledge the current treaty holders, the Mississaugas of the Credit First Nation. This territory is subject of the Dish with One Spoon Wampum Belt Covenant, an agreement to peaceably share and care for the Great Lakes region.



The Indigenous Students' Association at York's (ISAY) 21st All Nations Pow Wow

Centre for Indigenous Student Services: <https://aboriginal.info.yorku.ca/about-us/>

Native Land Digital: <https://native-land.ca/>



Webinar Outcomes

By the end of this webinar, new incoming international students will have more knowledge about:

- *A first-year students' academic calendar at York University*
- *Important deadlines, holidays and academic terminology*
- *Helpful student resources with academic information*

Agenda for Today:

The agenda for today's webinar is:

- *2025-2026 academic year at York University*
- *Question and Answers*
- *Upcoming Pre- Arrival Webinars and Events*

First Year at York University

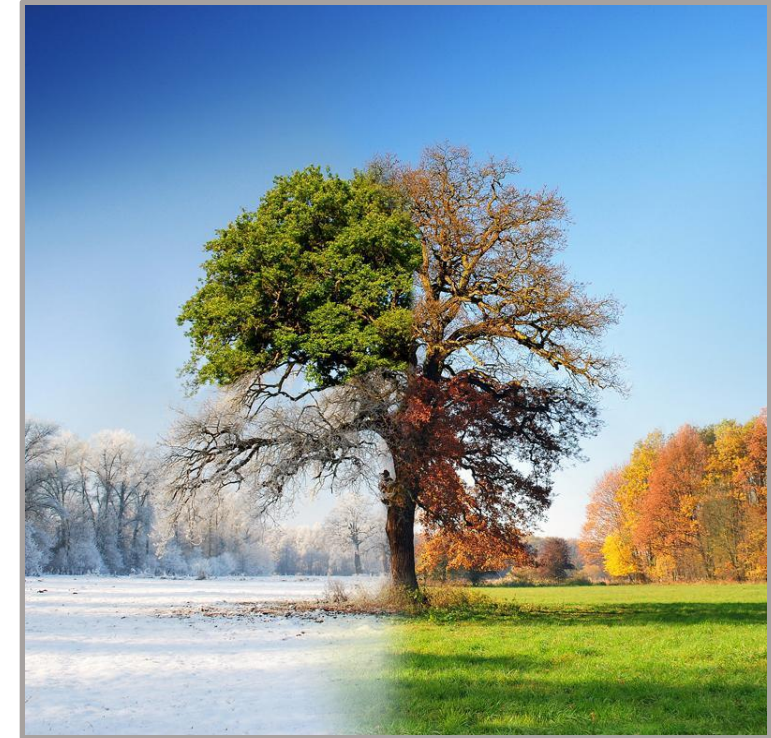
There are three (3) school terms here at York:



Fall (F): September- December



Winter (W): January- May



Year (Y): September- May

FALL

AUGUST

August 24th

August 25th

SEPTEMBER

OCTOBER

NOVEMBER

DECEMBER



August 2025 – “Welcome to York”

After saying a tough goodbye to your loved ones, you arrive in Canada for the first time — lots of emotions! Jetlagged, excited, and maybe a little nervous.

> August 24

- Residence move in for first year students

> August 25

- International & Exchange Student Orientation
 - Includes a service fair, campus tour, shopping trip and much more.

> August 25 – August 31

- Orientation Week
 - Faculty orientation, social events, and welcome activities.



Intl & Exchange Student
Orientation



York Orientation Website

**You are getting your first taste of university life and meeting friends
who will become your lifelong companions.**

YORK 

FALL

AUGUST

SEPTEMBER

Early September

Mid September

End September

OCTOBER

NOVEMBER

DECEMBER



September 2025 – “First Month of University Life”

First day of classes is fast approaching, you are nervous but excited to start your York University journey off with a bang!

› Early September

- **September 1**
 - Labour Day (University closed)
- **September 3**
 - First day of class
- **September 10**
 - Fall/Year tuition fee deadline
 - You can pay your tuitions through the [CIBC portal](#), [Convera Pay](#) or refer to the [Paying Your Account](#) website
 - First half of residence and meal plan fees due

› Mid September

- **September 16**
 - Last date to add a course **without permission** of instructor

› End September

- **September**
 - [York Fest](#) - The largest welcome-back week in the country!

FALL

AUGUST

SEPTEMBER

Early September

Mid September

End September

OCTOBER

NOVEMBER

DECEMBER

Refund Table

	TERM F	TERM Y	TERM W	TERM WL	TERM WS
COURSE TERM DATES	SEP 6 - DEC 20	SEP 6 - APR 25	JAN 8 - APR 25	JAN 22 - APR 19	JAN 8 - AUG 14
100%	Up to and including Sep 12	Up to and including Sep 12	Up to and including Jan 14	Up to and including Jan 28	Up to and including Jan 14
80%	Sep 13 - 19	Sep 13 - 19	Jan 15 - 21	Jan 29 - Feb 4	Jan 15 - 21
70%	Sep 20 - 26	Sep 20 - 26	Jan 22 - 28	Feb 5 - 11	Jan 22 - 28
60%	Sep 27 - Oct 3	Sep 27 - Oct 3	Jan 29 - Feb 4	Feb 12 - 18	Jan 29 - Feb 4
50%	Oct 4 - 10	Oct 4 - 10	Feb 5 - 11	Feb 19 - 25	Feb 5 - 11
40%	Oct 11 - 17	Oct 11 - 17	Feb 12 - 18	Feb 26 - Mar 3	Feb 12 - 18
30%	Oct 18 - 24	Oct 18 - 24	Feb 19 - 25	Mar 4 - 10	Feb 19 - 25
20%	Oct 25 - Oct 31	Oct 25 - Oct 31	Feb 26 - Mar 3	Mar 11 - 17	Feb 26 - Mar 3
10%	Nov 1 - 7	Nov 1 - 7	Mar 4 - 10	Mar 18 - 21	Mar 4 - 10
0%	Nov 8 onward	Nov 8 onward	Mar 11 onward	Mar 22 onward	Mar 11 onward

FALL

AUGUST

SEPTEMBER

Early September

Mid September

End September

OCTOBER

NOVEMBER

DECEMBER

Refund Table

	TERM F	TERM Y	TERM W	TERM WL	TERM WS
COURSE TERM DATES	SEP 6 - DEC 20	SEP 6 - APR 25	JAN 8 - APR 25	JAN 22 - APR 19	JAN 8 - AUG 14
100%	Up to and including Sep 12	Up to and including Sep 12	Up to and including Jan 14	Up to and including Jan 28	Up to and including Jan 14
80%	Sep 13 - 19	Sep 13 - 19	Jan 15 - 21	Jan 29 - Feb 4	Jan 15 - 21
70%	Sep 20 - 26	Sep 20 - 26	Jan 22 - 28	Feb 11 - 18	Jan 22 - 28
60%	Sep 27 - Oct 3	Sep 27 - Oct 3	Jan 29 - Feb 4	Feb 18 - 25	Jan 29 - Feb 4
50%	Oct 4 - 10	Oct 4 - 10	Feb 5 - 11	Feb 25 - Mar 3	Feb 5 - 11
40%	Oct 11 - 17	Oct 11 - 17	Feb 12 - 18	Mar 3 - 10	Feb 12 - 18
30%	Oct 18 - 24	Oct 18 - 24	Feb 19 - 25	Mar 10 - 17	Feb 19 - 25
20%	Oct 25 - Oct 31	Oct 25 - Oct 31	Feb 26 - Mar 3	Mar 17 - 24	Feb 26 - Mar 3
10%	Nov 1 - 7	Nov 1 - 7	Mar 4 - 10	Mar 24 - 31	Mar 4 - 10
0%	Nov 8 onward	Nov 8 onward	Mar 11 onward	Mar 31 onward	Mar 11 onward

If you choose to drop the course upto and including Sept 12, you get a 100% of the tuition you paid for the course back

FALL

AUGUST

SEPTEMBER

Early September

Mid September

End September

OCTOBER

NOVEMBER

DECEMBER

Refund Table

	TERM F	TERM Y	TERM W	TERM WL	TERM WS
COURSE TERM DATES	SEP 6 - DEC 20	SEP 6 - APR 25	JAN 8 - APR 25	JAN 22 - APR 19	JAN 8 - AUG 14
100%	Up to and including Sep 12	Up to and including Sep 12	Up to and including Jan 14	Up to and including Jan 28	Up to and including Jan 14
80%	Sep 13 - 19	Sep 13 - 19	Jan 15 - 21	Jan 29 - Feb 4	Jan 15 - 21
70%	Sep 20 - 26	Sep 20 - 26	Jan 22 - 28	Feb 5 - 11	Jan 22 - 28
60%	Sep 27 - Oct 3	Sep 27 - Oct 3	Jan 29 - Feb 4	Feb 12 - 18	Jan 29 - Feb 4
50%	Oct 4 - 10	Oct 4 - 10	Feb 5 - 11	Feb 19 - 25	Feb 5 - 11
40%	Oct 11 - 17	Oct 11 - 17	Feb 12 - 18	Feb 26 - Mar 3	Feb 12 - 18
30%	Oct 18 - 24	Oct 18 - 24	Feb 19 - 25	Mar 4 - 10	Feb 19 - 25
20%	Oct 25 - Oct 31	Oct 25 - 31	Feb 26 - Mar 3	Mar 11 - 17	Feb 26 - Mar 3
10%	Nov 1 - 7	Nov 1 - 7	Mar 4 - 10	Mar 11 - 17	Mar 4 - 10
0%	Nov 8 onward	Nov 8 onward	Mar 11 onward	Mar 11 onward	Mar 11 onward

If you choose to drop the course in the week of Oct 11 – 17 you would get 40% of the tuition you paid for the course back

FALL

AUGUST

SEPTEMBER

OCTOBER

October 13th

Mid October

NOVEMBER

DECEMBER



October 2025 – “Finding Your Rhythm”

You're making new friends and attending your first Canadian fall events. The leaves are beautiful, and the park walks are even better!

> October 13

- **Thanksgiving (National Holiday)** – No classes
 - This annual holiday is an occasion to gather with family, express gratitude and celebrate the autumn harvest with a hearty feast.

> Mid October

- **October 11 – October 17**
 - Fall reading week - Time for study, midterms, and relaxation
- **Think about joining student clubs?**
 - Get involved with the York community and build some experience. Find your favorite student clubs on [YU Connect](#).

You're feeling more at home, but homesickness might strike as you experience your first Canadian Thanksgiving.

FALL

AUGUST

SEPTEMBER

OCTOBER

October 13th

Mid October

NOVEMBER

DECEMBER

What are your winter plans?

- **Look into housing options for the upcoming semester**
 - Explore on/off campus housing options for Winter
- **Book an appointment with an academic advisor to review degree requirements**
 - It is important that you stay up to date with your degree progress, best way to do this is by being in regular contact with your academic advisor.
 - Refer to this website to find your faculty specific [Academic Advising Office](#)
- **Book a Flight**
 - Go home to visit family/friends
 - Explore Canada – visit a ski slope!

FALL

AUGUST

SEPTEMBER

OCTOBER

NOVEMBER

Entire November

November 4

DECEMBER



November 2025 — “The Hustle is Real”

Midterms are tough, but you’re learning how to manage your time — and maybe living off coffee and pulling a few all nighters — the true university experience

› Entire November

- **Midterms and academic deadlines**
 - You could refer to free on campus academic resources like the [Learning Skills Resources](#), [PASS](#), [SNACK](#), etc for any academic help you need to pass your midterms with flying colors!
- **Temperature get Colder (6C to -1C) – Your first snow fall (probably)!**
 - Tip: Wear lots of layers and invest in a good winter jackets

› November 4

- Last date to drop a course without receiving a grade

FALL

AUGUST

SEPTEMBER

OCTOBER

NOVEMBER

DECEMBER

Early December

Mid December

End December



December 2025 – “Finals & Festivities”

First snow! Time for holiday lights, warm drinks, and finishing your first semester.

> Early December

- **December 2**
 - Fall last day of classes
- **December 3**
 - Fall study day
- **December 4**
 - Fall final exams begin – time to lock in!
 - You could refer to free on campus academic resources like [Learning Skills Resources](#), [PASS](#), [SNACK](#), etc for any academic help you need to pass your midterms with flying colors!

> Mid December

- **December 19**
 - Fall final exams end wohoooo!

> Late December

- **Winter Break** → University closed
- Tip: York International will have a few events during winter break
- Temperature are dropping! (1C to -10C)
 - Tip: Wear more layers; gloves, hats, scarves, and snow boots

FALL

AUGUST

SEPTEMBER

OCTOBER

NOVEMBER

DECEMBER

Early December

Mid December

End December

Winter Break

> Are you within Toronto?

- Enjoy peak winter through the winter activity series offered by York international. Do some ice skating, enjoy hot chocolate, visit famous winter exclusive places in Toronto.

> Planning to buy new tech or gifts for your family?

- Boxing day sale is round the corner!



WINTER

JANUARY

Early January

Mid January

End January

FEBRUARY

MARCH

APRIL

MAY



January 2026 — “New Semester, New Energy”

New year, new semester! You’ve officially survived your first Canadian winter break (almost).

› Early January

- **January 5**
 - Winter classes begin
- **January 10**
 - Winter/Year tuition fee deadline
 - Second half of residence and meal plan fees due

› Mid January

- **January 26**
 - Last date to add a course **without permission** of instructor:
 - Remember to refer to [Winter 2026 Refund Table](#)

› Late January

- **January 24 – 30 (tentative)**
 - [Culturefest](#) - Vibrant displays and performances showcasing their diverse cultures
- **January 31**
 - Last date to add a course **with permission** of instructor

WINTER

JANUARY

FEBRUARY

Mid February

February 16

MARCH

APRIL

MAY



February 2026 — “Discover and Connect”

You’ve made it halfway through the year — maybe it’s time to join a dance, sports, or culture club!

> Mid February

- **February 14- 20**
 - Winter reading week - Catch up on studies (or sleep)

> February 16

- **Family Day (University Closed)**

> Lots of snow

- **Tip:** Make sure to give yourself more travel time, because there might be some delays in transportation

WINTER

JANUARY

FEBRUARY

Mid February
February 16

MARCH

APRIL

MAY

What are your summer plans?

> Take a few summer classes

- Enrolment dates may vary from student to student keep checking your [course enrollment page](#)

> Book an appointment with an academic advisor to review degree requirements

- It is important that you stay up to date with your degree progress, best way to do this is by being in regular contact with your academic advisor.
- Refer to this website to find your faculty specific [Academic Advising Office](#)

> Book a Flight

- Go home to visit family/friends
- Explore Canada or other countries

> Getting a summer job or internship

- Look into on-campus summer job or [Work/Study positions](#)
- If you need help creating a resume, interview prep, CVs, or Cover letters, visit the [Career Centre](#).

WINTER

JANUARY

FEBRUARY

MARCH

Entire March

Mid March

Late March

APRIL

MAY



March 2026 — “Growth and Grit”

Career fairs, assignments, and planning for summer — it’s getting real now!

> Entire March

- More midterms tests and academic deadlines

> Mid March

- March 9
 - Last date to drop a course without receiving a grade
- March 10 – April 6
 - Withdraw from a course and receive a grade of “W” on transcript

JANUARY**FEBRUARY****MARCH****APRIL**

Early April

Mid April

Late April

MAY

April 2026 — “End of Year!”

You're wrapping up your first year, it's the last stretch — packing, exams, and maybe a looking forward to summer. The leaves and flowers are starting to blossom — the summer days are near!

> Early April

- **April 6**
 - Winter last day of classes
- **April 7**
 - Winter study day
- **April 8**
 - Winter final exams begin – time to lock in!

> Mid April

- **April 24**
 - Final exams end wohoooo!

> Late April

- **Summer Break**
- **More sun and warmth (5C -10C)**

JANUARY

FEBRUARY

MARCH

APRIL

MAY

Early May



May 2026 — “End of Year!”

You have successfully completed your first year! Time to explore Toronto, work part-time, or take a summer course — you’ve earned it!

› Early May

- **Summer Classes**

- Are you doing summer classes?

- S1 term classes start on **May 4th 2026** and end on **June 15th 2026**.
 - S2 term classes start on **June 22nd 2026** and end on **August 3rd 2026**.

- **Work/Study positions start date**

- Work/study positions begin early May

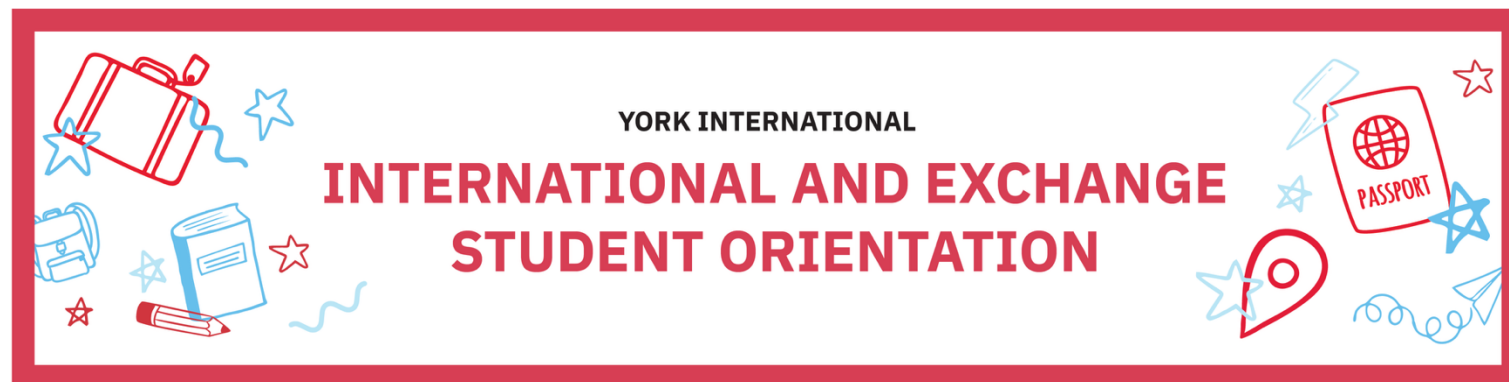
You’ve successfully navigated the challenges and celebrations of your first year — now onto the next chapter!

A close-up photograph of a person's hands typing on a silver laptop keyboard. The person has red nail polish and is wearing a blue and white striped shirt. The laptop screen displays the Zoom logo in blue. The entire image is framed by a thick red border.

Upcoming Webinars & Sessions

York International

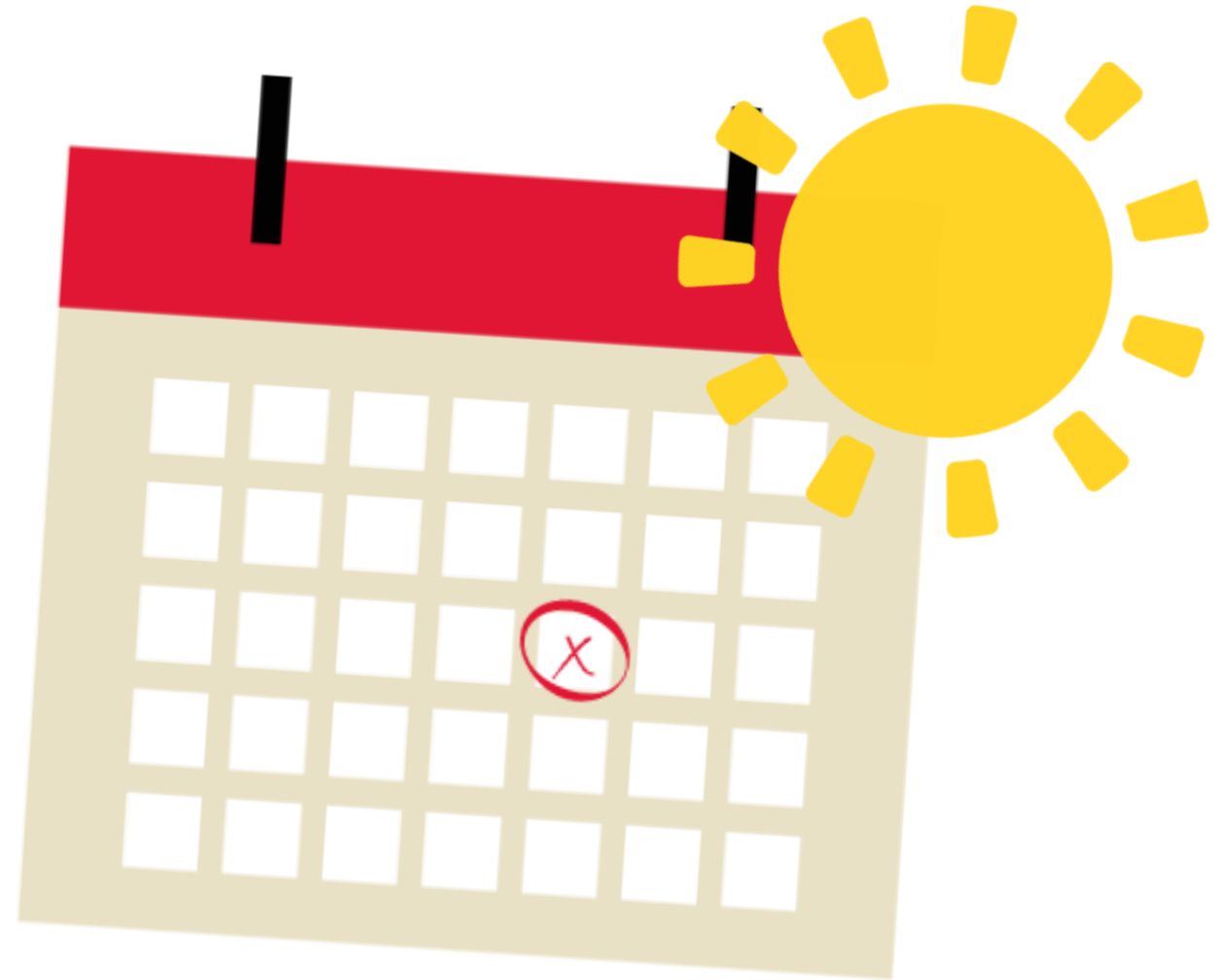
Fall 2025 International and Exchange Student Orientation



Join us for an incredible opportunity to meet fellow incoming international students, build community, and to learn all about important resources and services available to you at York University!

- **Date:** Monday, August 25th, 2025
- **Time:** 9:00AM to 6:00 PM
- **Location:** Second Student Centre, Second Floor

York International's Event Calendar



FOLLOW US ON SOCIAL MEDIA!



@yorkuintlstdnts



@yorkuintl



Global
Engagement –
York University



York
International



@yorkuintlstdnts

A large crowd of students is gathered at a night event, likely a school pep assembly. Many students are wearing red t-shirts with a white lion logo and the text "WE ARE ALL LIONS". Some students are holding up phones to take pictures. In the background, there are banners with the letter "D" and a scoreboard showing "0 4 0".

**Stay connected, stay informed—
don't miss our next session!**