

Aalto University

As an exchange
destination

Sasha Spurna
2024

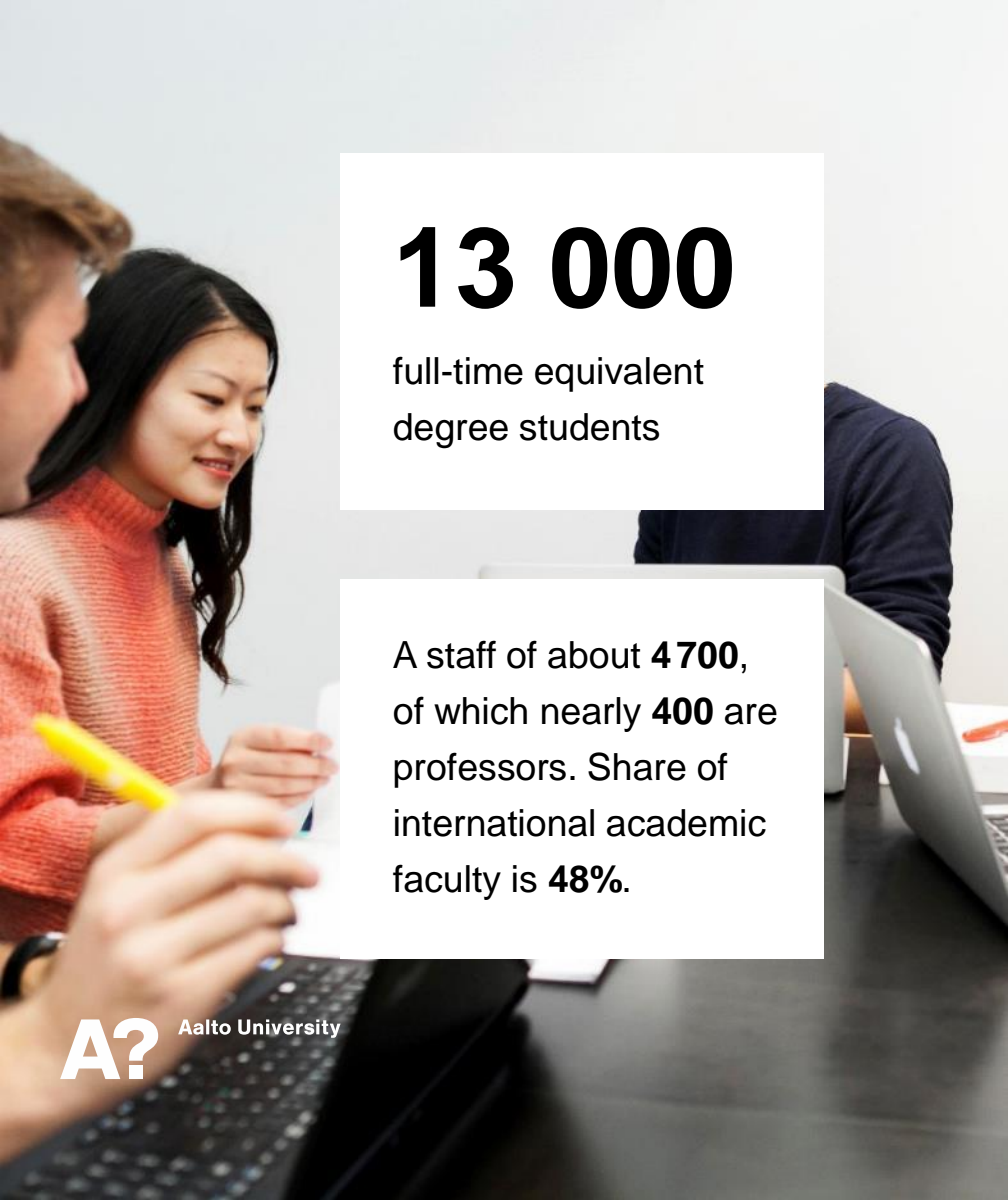


Merger of three leading Finnish universities





**Aalto University is
a multidisciplinary
community of bold
thinkers where
science and art
meet technology
and business.**



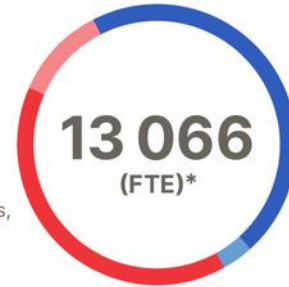
13 000

full-time equivalent
degree students

A staff of about **4 700**,
of which nearly **400** are
professors. Share of
international academic
faculty is **48%**.

Our community in numbers

6 067
master's students,
of which **1 658**
are international



6 999
bachelor's students,
of which **595** are
international

* Full-time equivalent degree students.

1 000

exchange students per year

Six dynamic schools

School of Arts, Design and Architecture

architecture; art and media; design; film

School of Business

accounting; economics; finance; information & service management; management studies; marketing

School of Chemical Engineering

bioproducts and biosystems; chemistry and materials science; chemical and metallurgical engineering

School of Electrical Engineering

information and communications engineering; electronics and nanoengineering; electrical engineering and automation;

School of Engineering

built environment; civil engineering; mechanical engineering

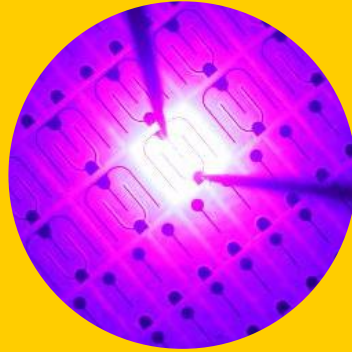
School of Science

applied physics; computer science; industrial engineering & management; mathematics & systems analysis; neuroscience & biomedical engineering

At Aalto you can have it all!



**Our campus
is surrounded
by both city
life and
stunning
nature...**



**... in the
biggest
technology
hub in
Northern
Europe...**



**... right next
to Helsinki -
the capital
city of the
happiest
country in the
world -**



**... and a
beautiful
national park.**

A unique collaboration hub

Helsinki City Centre

Aalto
University

Collaboration hub

Campus

- **Live and study at the Aalto Campus**
- **Great research facilities and a start-up ecosystem**
- **Reach the campus by metro, bus or city bike**
- **Versatile services: restaurants, grocery stores, sports facilities, event venues**
- **Student culture – student associations, clubs and events**

Studying



WHERE

Majority of courses from your field of study in Aalto corresponding school / programme

Additional courses from other Aalto schools

HOW

Student-centric learning style

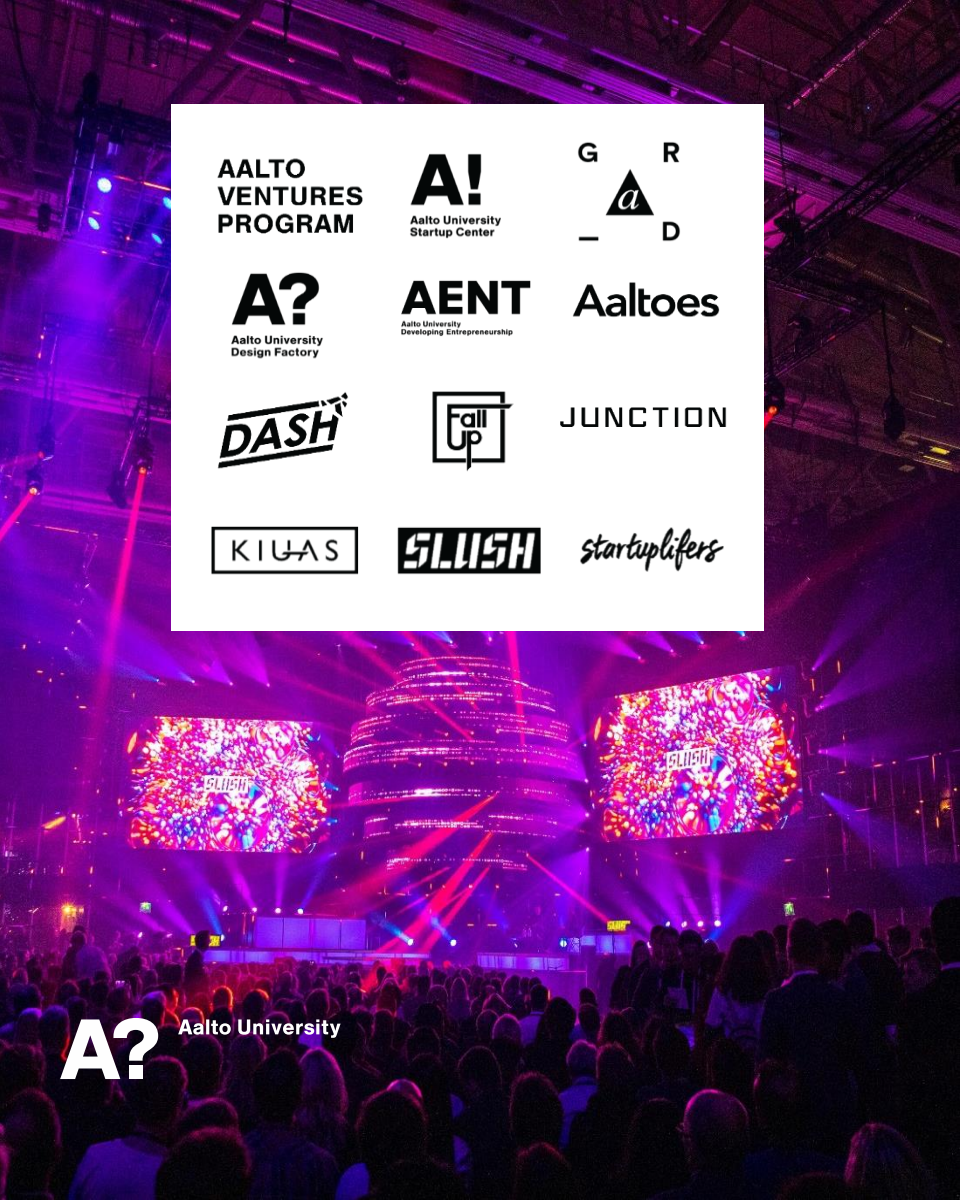
Learning process is important

WHAT

Master level courses in English
Some Bachelor courses in English

EXTRA

Finnish language courses, interdisciplinary and entrepreneurship project courses



AALTO
VENTURES
PROGRAM

A!
Aalto University
Startup Center

G R
a
_ D

A?
Aalto University
Design Factory

AENT
Aalto University
Developing Entrepreneurship

Aaltoes

DASH

Call
Up

JUNCTION

KIUIAS

SLUSH

startupilifers

A? Aalto University

Vibrant entrepreneurial community

50%

of Finnish startups founded
in universities come from the
Aalto community

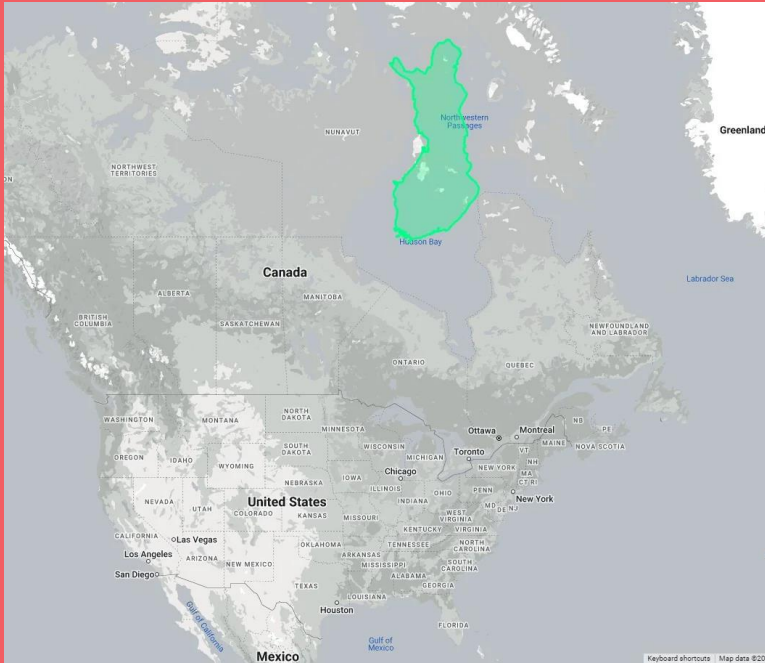
70–100

companies founded every
year in our ecosystem



Academic calendar

- Autumn term: Sep to Dec
- Spring term: Jan to May



Autumn I

Autumn II

Spring III

Spring IV

Spring V

Autumn I - II

Spring III-IV

Spring IV-V

Spring III-V

Autumn I - Spring V



Administration

- **Nomination by your home university**
 - Your home university coordinator nominates you to Aalto
- **Instructions how to apply**
 - Aalto contacts you directly
- **Online application**
 - For the Sep-Dec term - deadline in April
 - For the Jan-Jun term - deadline in October
- **Application results**
 - within 1,5 months after the deadline
- **Get ready for your exchange stay at Aalto!**



Arrival to Aalto

- **Orientation days**
 - In September & January
 - Smooth start of studies
- **Student tutors**
 - Student tutor for every student
 - Volunteer Aalto students
- **Enrolment at the university**
 - Possibility to join Aalto University Student Union (AYY)

Accommodation

- ❑ Aalto University does not own any student dormitories
 - ✓ Exchange students have to look for housing themselves

- ❑ Two student housing providers in the Helsinki metropolitan area
 - ✓ HOAS (Foundation for Student Housing in the Helsinki Region)
 - ✓ AYY (Aalto University Student Union)

- ❑ 400 – 1000 CAD (electricity, water, wifi)

- ❑ Shared apartments



Cost of living = 1200 CAD



Food

4 CAD

*1 meal in campus
+ salad and bread*



Internet

30 CAD

*1 month
unlimited
internet*



Transportation

60 CAD

*1 month
metro, bus,
tram, ferry,
local trains*



Fitness

130 CAD

*4 months
gym, group
fitness*

Student Life



Safe Nordic country



Student discounts for public transportation



Strong student culture



Many events and activities



Discovering Finland



Student housing



Discounts in student restaurants



Healthy environment

Useful links

- **Website for incoming exchange students**
 - <https://www.aalto.fi/en/international-students/exchange-students>
- **Accommodation**
 - <https://www.aalto.fi/en/international-students/housing-for-exchange-students>
- **Aalto website**
 - <https://www.aalto.fi/en>



Social media

<https://www.instagram.com/aaltouniversity/>

<https://www.aalto.fi/snapchat/>

<https://www.linkedin.com/school/aalto-university/>

<https://www.youtube.com/user/aaltouniversity>

<https://twitter.com/universityaalto>

<https://www.facebook.com/aaltouniversity>

<https://finland.fi/>

<https://www.instagram.com/niko.laurila/>



Contact information

Ms. Sasha Spurná

Coordinator, Incoming exchange students

Learning Services (LES)

School of Electrical Engineering



incoming-elec@aalto.fi