

Pre-Arrival Webinar Series:

Living in Canada: What to Expect

YORK 



Land Acknowledgement

York University recognizes that many Indigenous Nations have longstanding relationships with the territories upon which York University campuses are located that precede the establishment of York University.

York University acknowledges its presence on the traditional territory of many Indigenous Nations. The area known as Tkaronto has been care taken by the Anishinabek Nation, the Haudenosaunee Confederacy, and the Huron-Wendat.

It is now home to many First Nation, Inuit and Métis communities. We acknowledge the current treaty holders, the Mississaugas of the Credit First Nation. This territory is subject of the Dish with One Spoon Wampum Belt Covenant, an agreement to peaceably share and care for the Great Lakes region.



The Indigenous Students' Association at York's (ISAY) 21st All Nations Pow Wow

Centre for Indigenous Student Services: <https://aboriginal.info.yorku.ca/about-us/>

Native Land Digital: <https://native-land.ca/>



Webinar Outcomes

By the end of this webinar, new incoming international students will have more knowledge about:

- *Housing options in York University*
- *Application process and deadlines for on campus residence*
- *Housing options outside campus*

Agenda for Today:

The agenda for today's webinar is:

- *Housing Services*
- *Off-Campus Housing Resources*
- *Questions & Answers session*
- *Upcoming Webinars and Events*

Housing Services

A photograph of a modern building with large glass windows and a paved sidewalk, framed by a red border. The scene is captured from a low angle, looking down the sidewalk. The building on the left has a series of tall, narrow glass panels. The sidewalk is made of light-colored bricks. To the right of the sidewalk is a grassy area with several trees. In the background, a street with cars and a modern building with a red section is visible. The sun is shining through the trees, creating a bright spot in the sky.

WHAT IS RESIDENCE?



ROOM TYPES

Traditional-Style

standard double and single rooms, sharing common washrooms and lounge areas where cleaning is provided. Meal Plan is required.

Suite-Style

Single and double rooms within a suite with shared washroom(s) and kitchen. Preferred choice for upper-year students who may like to share amenities and cook and clean for themselves

ROOM STYLES

TRADITIONAL-STYLE SINGLE ROOM



TRADITIONAL-STYLE DOUBLE ROOM



ROOM STYLES

SUITE-STYLE SINGLE ROOM



SUITE-STYLE DOUBLE ROOM



FURNISHINGS

Furnishings included:

- Single bed
- Lamp
- Desk
- Chair
- Dresser
- Closet
- Garbage bin



KEELE RESIDENCES

Traditional-style Residences

FEATURES

- › Single and Double Rooms
- › Common shared communal bathrooms
- › Meal Plan Required
- › Common rooms for events
- › Mixed-gender with some single-gender floors

BUILDINGS

- › Founders[^]
- › Tatham Hall^{*}
- › Vanier^{*}
- › Winters^{*^}
- › Stong
- › Bethune (half)



Traditional-Style Residence Floor Plan



Suite-style Residences



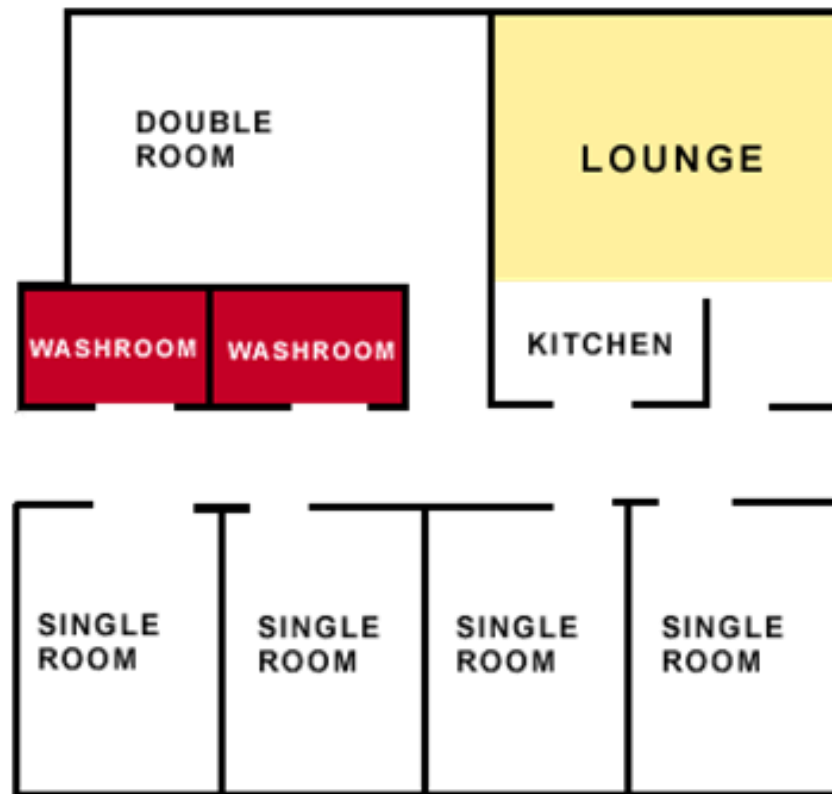
FEATURES

- › Single and Double Rooms in 2-12 person suites
- › Semi-private bathrooms (shared only with those in the suite)
- › Kitchen appliances to cook for yourself
- › Meal Plan Optional
- › Some mixed gender and some single gender suites

BUILDINGS

- › Calumet - 6 person suites
- › Pond – 2 person suites
- › Bethune (half) – 4 & 12 person suites

Suite-Style Residence Floor Plan



ACCOMMODATION NEEDS

- Housing & Conference Services strives to accommodate the needs of students with physical disabilities.
- At Keele Campus we provide adapted unit options for wheelchair users and rooms outfitted with visual alarms.



GLENDON RESIDENCES

WOOD & HILLIARD

- › Single and Double rooms
- › Mixed Gender Floors
- › One Female Only Wing
- › Common Shared Bathroom
- › Meal Plan Required



RESIDENCE LIFE

Residence Life

COMMUNITY & BELONGING

- Meet new people and make new friends
- Learn how to be a part of a larger community of people
- Feel a sense of connection, belonging at York University
- Enhanced community engagement and social programming

SUPPORT

- Residence Dons
 - Upper-year students providing support, safety, and community building
- Residence Life Coordinators
 - Full-time professional staff providing additional support for residents



RATES

2024-2025

(8 month contract)

KEELE

- Traditional Style
 - Double - \$7862 - \$8152
 - Single - \$8566 - \$8882
- Suite Style
 - Double - \$9226 - \$9726
 - Single - \$9260 - \$11076

GLENDON

- Double - \$8092
- Single - \$8348 - \$9312
- Semi-private - \$12154-12270

Dining plans are priced in addition to the above costs. They range in price from \$4850-\$6500.

*Suite-style rooms have the option of a Convenience plan at \$3250

THE HOUSING APPLICATION PROCESS

- Applications are currently available through the Apply for Residence page
- Students are eligible to apply once they are admitted to **a full-time degree program** at York University.

LIFESTYLE

- A series of lifestyle questions will be used to match your compatibility with potential roommates/suitemates, if applicable.
- It is important complete and answer all questions honestly so we may secure you a compatible roommate/suitemate.

Lifestyle Preferences

The following questions will be used to match your compatibility with potential roommates/suitemates so please make sure you answer these questions completely and honestly.

A) Musical Instruments
Do you mind if your roommate practices a musical instrument in the room?:

B) Minds Roommates Friends
Do you mind if your roommate has a lot of friends in the room / suite?:

C) Early Sleeper
Do you prefer a roommate who goes to bed before 11:00pm?

D) Early Riser
Do you prefer a roommate who rises before 8:00am?

E) Neat And Tidy
Do you like a neat and tidy room?:



A **\$250 application fee** is required to complete your application.



Please ensure you have read the Current/New Students FAQ's, the Residence Occupancy Agreement & Rates and the Application Cancellation Policy on the website for the policies regarding this fee.

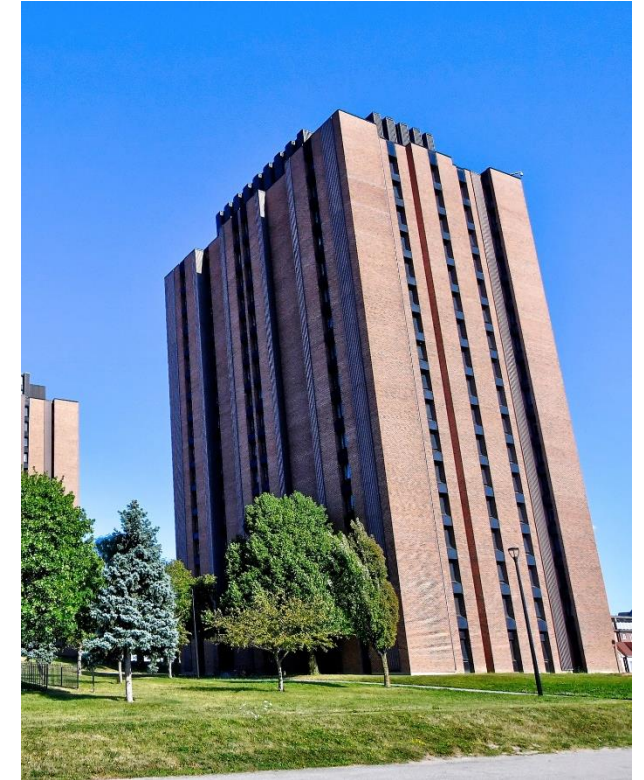
THE RESIDENCE CONTRACT

- Upon accepting a housing offer, you will be asked to pay a \$750 room deposit
- The Undergraduate Residence Occupancy Agreement is for the Fall & Winter Terms
- **One-term only Agreement** is available for the following:
 1. Exchange students
 2. Students that are admitted for the Winter Term
- Residences are closed for the Winter Holidays; however, students wish to stay in residence during this period may be permitted to remain at an extra fee pending approval.

YORK APARTMENTS - KEELE

- Apartment-style residences are reserved for graduate & law students and students with families (spouse/child)
- Self-contained apartments
- Mix of Furnished & Unfurnished options:
 - Bachelor (1 student)
 - One-bedroom (1 student or student couple)
 - Two-bedroom* (2 students or 1 student with family (Spouse/child/ren))

*Limited; priority is given to students with families
- Policies follow the Ontario *Residential Tenancies Act*
- Applications are open and accepted throughout the year.



YORK APARTMENT COST

- No application fee
- Monthly rate* ranges between \$1,123 (bachelor) and \$2,028 (2-bedroom)
- Rates are monthly and include heat, hydro and water
- Telephone, Cable TV, Parking & Laundry are extra
- Wireless Internet is available through Air York Plus

* Rates are effective as of January 2024. Rates will be updated in May 2024.

CONTACT US!

Undergraduate Residences

416-736-5152, Press "2"

undergradres@yorku.ca

York Apartments

416-736-5152, Press "1"

apstatus@yorku.ca

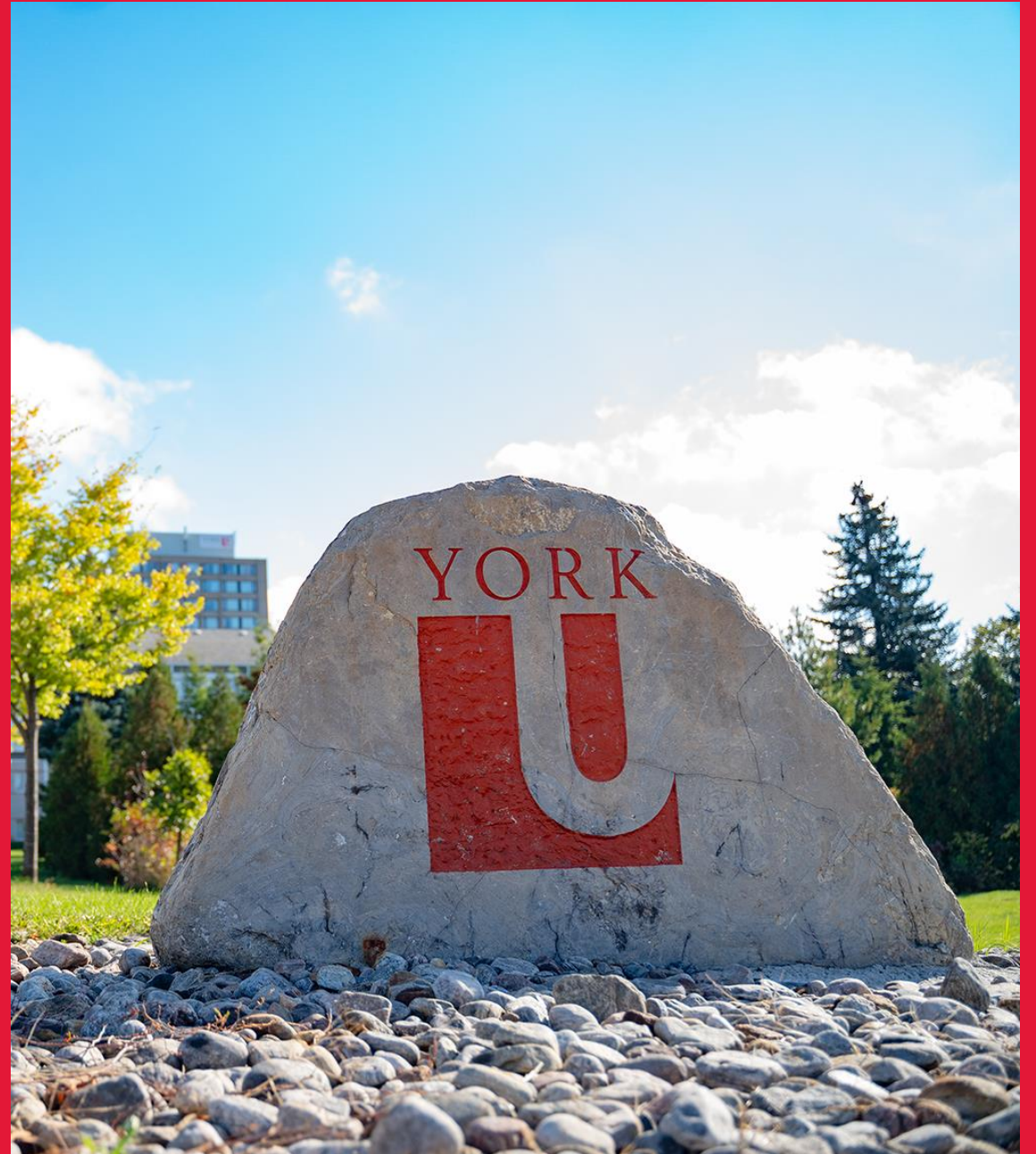
www.yorku.ca/housing

www.reslife.yorku.ca



Off-Campus Housing Resources

YORK 



York University Off-Campus Housing

- › Find accommodation options around York University on [Off-Campus Housing website](#)
- › Find a roommate
- › Meal options on-campus
- › Login by using PASSPORT YORK account

The Quad & Village

The Quad

- Just at walking distance from campus
- Various types of rooms are available for a yearly basis.
- Subleasing is also an option.



Village

- Most affordable place to live near York University.
- At a walking distance from the campus.
- Lease signing directly with landlord.



Other areas to consider near York University

Vaughn

- Located 20 minutes from York University Subway Station
- It offers a variety of accommodation types



Yorkdale

- There are many condos near Yorkdale area and the subway station is close by.
- Takes about 30 minutes to commute from Yorkdale Subway Station to York University's Keele campus.



Housing Resources: Short term rental options

Airbnb

Provides cost effective options and allows location flexibility.



Amber

A partnership with universities to provide location specific housing options (for example: York University).



Places4students.com

Create an account for free and look for properties in Toronto.



Housing Resources: Long term rental options

Rentola

One stop destination to see several properties and compare prices.



Condos.ca

Create a free account and access the largest database for houses in GTA.



RE/Max

Work with #1 most trusted real estate agents who are voted for six times in a row.



Housing Resources: Long term rental options

Realtor

Find both places and registered real estate agents in GTA.



Zolo

Find houses to rent in Toronto area.



Housing Resources: Long term rental options

Liv.rent

It is a website that provides people with listings around Toronto and across Canada. You can search for accommodations specific to your area preferences.



Zumper

A website where you can search accommodations both long-term rentals and short-term rentals specific to your needs.



Housing Resources: Applications

Kijiji

- Whether it is looking for places for rent near York University or even selling a jacket, you can-do all-in Kijiji app.
- Available on both iOS and android.



Facebook Marketplace

- It comes under the umbrella of Facebook. Like Kijiji you can buy or sell anything, rent a room or house.
- You just have to change your location in it.



A close-up photograph of a person's hands typing on a silver laptop keyboard. The person has red nail polish and is wearing a blue and white striped shirt. The laptop screen displays the Zoom logo in large blue letters. The entire image is framed by a thick red border.

Upcoming Webinars

Pre-Arrival Webinar

Financial Planning for International Students

Financial Literacy



The **Financial Planning for International Students** webinar provides students with the general cost of living in Canada as well as the financial resources available to aid them in making more informed decisions in their finances.

- › **Day/Date:** Wednesday, February 21st, 2024
- › **Time:** 9:00AM to 10:00AM
- › **Registration:** <https://yorku.zoom.us/meeting/register/tJYkd-6uqDkvHtCcbvCTksTiN0KtgPjIzmtG#/registration>

Pre-Arrival Webinar

Student Life at York

Living in Canada



The **Student Life at York** webinar will provide students with information they need to know about student life as York University students in Canada. You will get insight into Canadian culture, language and student life expectations.

- › **Day/Date:** Wednesday, March 6th, 2024
- › **Time:** 9:00 AM to 10:00 AM
- › **Registration:** <https://yorku.zoom.us/meeting/register/tJEqcOCqqj0qH9VbCx8R6auEjreMiAEltVpy#/registration>



Program: YI Meet Up

- **Date: February 15th , 2024**
- **Time: 10:00am – 11:00am (EST)**

YI Meet Up is a virtual social event that provides incoming or deferred students an opportunity to meet new people, make new connections and introduce them to campus life through a variety of activities, conversations and group initiatives. The program aims to ease the transition to York and to Canada and to help find a sense of community before even arriving.



Global Peer Program Community Event

February Community Event

Global Peer Program

Theme: York University



Monthly community events will focus on a specific theme which support your successful transition to York University and Canada. You will have the opportunity to meet other new international students and connect with GPP mentors in a small group setting.

- › **Day/Date:** Friday, February 23rd , 2024
- › **Time:** 9:00AM to 10:30AM EST
- › **Registration:** https://yorku.zoom.us/meeting/register/tJ0sc-urrDosHdJ89_gCrpLbB6-pT2e3pWom


York International Event Calendar







FOLLOW US

YORK U
INTERNATIONAL

 fb.com/york.international

 @yorkuintlstdnts

 @yorkuintlstdnts

 @yorkuintl

Thank you!

