

# WHERE IS Swansea?

A thriving city location set within a stunning area of outstanding natural beauty

Closest university to a beach in the world



**1 hour** from Wales' International Airport

**3 hours** from London by train

# Study Abroad

## AT SWANSEA UNIVERSITY

### WALES, UK



### SINGLETON CAMPUS



### BAY CAMPUS



Based on 41,000+ student reviews collected overall

**A UK SAFE STUDENT CITY**

(The Complete University Guide 2020)



(The highest award (Gold) for teaching excellence at UK universities)

**3<sup>RD</sup> MOST AFFORDABLE UK UNIVERSITY TOWN**

(Totallymoney.com 2019)

[swansea.ac.uk/studyabroad](http://swansea.ac.uk/studyabroad) | [studyabroad@swansea.ac.uk](mailto:studyabroad@swansea.ac.uk)

  [swanseauniglobal](https://www.instagram.com/swanseauniglobal)  [swanuniglobal](https://twitter.com/swanuniglobal)

[#swanseauniglobal](https://twitter.com/swanseauniglobal)



Oystermouth Castle



Swansea Marina



# REASONS TO STUDY ABROAD AT SWANSEA UNIVERSITY

## SMALL CITY. BIG PERSONALITY

From the Maritime Quarter and Uplands to nearby Mumbles, discover a city with plenty of charm and bags of character.

## ALL JOINED UP

Town, beach, campus – it’s quick and easy to get wherever you need to be in Swansea – by bike, bus or on foot.

## BREATHING SPACE

Swap city streets for Instagram - worthy scenery with Three Cliffs Bay, Rhossili and the Brecon Beacons the ideal playground for outdoor adventurers.

## IT TAKES ALL SORTS

Whether you’re a sports fanatic, culture vulture or outdoor adventurer, you’ll find plenty to keep you busy between lectures.

## JUST ASK THE STUDENTS

They love living and studying here so much that the university was crowned UK University of the Year 2019 – as voted for by the students.

## OUR HISTORY

And we don’t just mean our wonderful castles! We’ve been welcoming Visiting and Exchange Students to Swansea University for over 30 years.

Three Cliffs Bay



## WATCH BENJAMIN’S VIDEO:

“What drew me to Swansea University was the scenery; it’s in a beautiful coastal area close to London but far enough away to have its own scene. As someone who is interested in international travel I found Swansea a wonderful first step in my exploration of the world.”

(Benjamin Nichols, Illinois, USA)



## WHAT CAN I STUDY?

From Aerospace Engineering to Zoology...

Choose from a wide range of classes in diverse subjects:

- Arts & Humanities
- Engineering
- Human & Health Sciences
- Law & Criminology
- Business, Management & Marketing
- Medicine
- Science



## HOW AND WHEN DO I APPLY?

You can apply to Swansea University as a Visiting/Fee Paying or Exchange student for a full Academic Year or just one Semester.

- by mid-May for September start
- by end of October for a January start

Check with your home university’s Study Abroad Office to find out what your options are. If we don’t have an agreement in place with your university you are still welcome to apply to us directly online.



## HOUSING

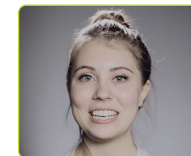
We aim to offer our Visiting and Exchange students rooms in our university accommodation but also assist students with finding housing in the private sector if they prefer.



[swansea.ac.uk/accommodation](http://swansea.ac.uk/accommodation)



## WATCH GRACE’S VIDEO:



“I study International Business in Germany and Swansea was really interesting to me because they teach the same range of topics here but they have some specific courses that aren’t taught at my home university so I was interested in learning more than I could back home.”

(Grace Reinhardt, University of Reutlingen, Germany)