

CORPORATE PROFILE

2016

ATHENS MAIN CAMPUS:

74, Sorou str., Maroussi, 151 25, Greece
T: +30 2106199891, F: +30 2106199320

ATHENS DOWNTOWN CAMPUS:

125, Patission Av., Athens, 112 51, Greece
T: +30 2106199891, F: +30 2106199320

PIRAEUS CAMPUS:

Filonos & 1A, Sotiros str., Piraeus, 185 35, Greece
T: +30 2104121200, F: +30 2104128095

THESSALONIKI CAMPUS:

14, El. Venizelou str & Tsimiski, Thessaloniki, 546 24, Greece
T: +302310241010, F: +302310261381

1. BRIEF PROFILE

The Metropolitan College (AMC) is the higher education arm of the AKMI Educational Organisation, the largest private post-secondary institution in Greece with more than 10,000 students nationwide, which comprises: **IEK AKMI**, an Institute of Vocational Training; **KEK AKMI**, a Private Continuing Education Institute; **European Enterprise Organisation S.A.**, an Athens-based Consulting Company; and **AMC**, a private College of Higher Education with four campuses across Greece.

AMC, founded in 1982, focuses on the intellectual and academic development of its students. It is recognised among students as the leading choice of high quality tertiary education in Greece.

AMC's main priority is the continuous development of critical thinking, academic progress and academic research spirit for each of its students. With some 34 years experience in Greek education, AMC collaborates with well established educational institutions in the UK in order to offer academic programmes that lead to contemporary technical and scientific knowledge and respond to the current demands of the national and international employment market. AMC's academic structure and on-going development of academic staff, along with its infrastructure, the fully-equipped libraries and the technological support of the educational procedures ensure excellence in the quality of the educational services offered. The programmes of study provided are specially-designed to meet the demands of students and facilitate the entry of its graduates as employees into the Greek and international job market.

2. MISSION, VISION AND VALUES

The mission of AMC is to provide transformational education to its students intended to instil in them strong academic skills and discipline, build professional character and create life-long intellectual passion. Equipping them with the knowledge, discipline and leadership qualities that would enable them to become confident individuals, successful professionals and productive citizens in a globalized world drives the mission of the College. AMC's underlying philosophy is that a distinctive academic experience should provide students with a rich, rigorous, multi-faceted and diverse educational background endorse their life-long learning and prepare them to meet the needs of an ever-changing world. In pursuit of its vision for academic excellence, AMC seeks to attract and retain outstanding faculty recognised for expertise in their field, who excel in the art of teaching, student mentoring, endeavours of scholarship, research and service. Building on this firm foundation of teaching competence and devotion to learning and scholarship, AMC has established itself as a centre of excellence for the delivery of British higher education in Greece.

AMC, in collaboration with well established British Universities, aims to continue to be a leading provider of higher education in a broad range of academic and professional disciplines by delivering high quality programmes in a nurturing environment where quality is always underpinned by the drive for excellence and the commitment to the principles of transformational education in order to enrich graduates with strong employability skills.

In support of our mission, we promote a set of core values within our academic community, which include excellence, quality, integrity, partnership, innovation and respect. These values guide our day-to-day activities and underpin our ethical framework.

3. LEARNING RESOURCES AND ENVIRONMENT

AMC has heavily invested in providing its students with state-of-the-art facilities and has campuses in Maroussi (northern suburb of Athens), downtown Athens, Piraeus and Thessaloniki. The main campus is located in a privately owned estate of 13,000 square metres in a prime location within the municipality of Maroussi and easily accessible from/to the centre of Athens. It was built following rigorous architectural guidelines with the aim of satisfying the ever-increasing student needs. As of September 2016, 5,000 sq.m. have been added to the existing campus, with brand new facilities which house administration offices, laboratories, a modern Library and beautiful surrounding areas of green.

The branch in Thessaloniki is located in a historic building of 2,500 sq.m., right in the city centre. In June 2013, AMC inaugurated its third campus in Piraeus of 2,000 sq.m., with a view to accommodating students in the southern suburbs of Attica and the new Athens Downtown campus which opened its doors in 2015.



Students have the opportunity to study in ideal conditions which include state-of-the-art labs for each field of study, Libraries, Lecture Theatres, teaching rooms, as well as recreation and sports amenities. All these facilities help students reach academic excellence, but also enjoy a pleasant student life. All AMC campuses are accessible to students with special needs. All AMC premises adhere to Greek legislation as demonstrated by the fact that the College has successfully been awarded establishment and operational licences in accordance with Greek law.

Computers at AMC laboratories are equipped with the latest software, together with specialist programmes relevant to the courses offered, with all students having unlimited access to Internet facilities. There are also several specialised labs, purpose-built teaching facilities, satellite television, multi-media laboratory and interpreting facilities. Furthermore, AMC offers a fully-equipped Library with thousands of book titles and easy access to the online libraries of the collaborating universities.

Student experience at AMC is incredibly rich as our philosophy is based on the integral development of our students. For example, we offer a wide range of opportunities for our students to engage in extracurricular activities. AMC is one of the very few private colleges in Greece to have a comprehensive Sports Club with a 25m indoor swimming pool, a fully-equipped gym offering a variety of group exercise programmes and a basketball court.

Students can also relax and socialize in the Lounge Café which offers a wide range of snacks, coffee, food and refreshments.

4. THE MARKET AND RECENT DEVELOPMENTS

The alignment of Greek legislation to the one introduced by the European Union in 2010 and the subsequent gradual liberalization of higher education have created the framework within which AMC plans to continue to be a leading provider of high quality undergraduate and postgraduate courses in collaboration with well-established higher education institutions. In particular, in May 2010 the Greek government incorporated Directive 36/2005/EC into Greek national law (Presidential Decree No 38, 27 May 2010) and granted Greek colleges official government recognition. In that framework and following a rigorous inspection, AMC received its operating license by the Greek Ministry of Education (Ministerial Decision 2795/IA/27-7-2010, Government Gazette 1320 B'). Its institutional status is now fully in line with the newly introduced legislation.

Furthermore, under recent legislation (Government Gazette 229/19-11-2012), the role of colleges was enhanced and the professional qualifications of college graduates are now recognised as equivalent to the qualifications of Greek State University graduates. Information about the recognition of professional qualifications can be found at the official site of the Greek Ministry of Education (<http://www.minedu.gov.gr>).

For further information, please visit the College website at <http://www.metropolitan.edu.gr/en>

5. PORTFOLIO OF ACADEMIC ACTIVITIES

The carefully selected programmes offered by AMC lay emphasis on both theory and practice providing students with a solid professional background in their chosen field of study. AMC has a policy of offering programmes which are based on careful consideration of student/employer expectations, but also which fall within the specific expertise and experience of AMC academic and management staff. Such a policy enables the College to lead in the delivery of special programmes, whilst also offering popular programmes based on well founded academic knowledge and up-to-date relevant research. In particular, the College has a strong track record in key Health-allied programmes of specific interest to Greek students, using top-class professional staff and a unique network of clinical placements. As the range of required knowledge and experience/training in the health-related disciplines is considerably wide, AMC has given great emphasis on providing students with extensive clinical experience. This objective is addressed through structured interdisciplinary clinical placements in a wide variety of clinical contexts which fulfil the stringent criteria set by the UK's Quality Assurance Agency for Higher Education (QAA) and by the parent British institution. In particular, students are offered the opportunity to gain clinical experience by working in both private and public settings, such as hospitals and clinics/surgeries for adults and the elderly, rehabilitation centres, NGOs and other healthcare institutions. It is important to note that some of the training facilities are located very close to AMC campuses.

All courses offered at AMC fulfil all the stringent criteria set by the QAA and by the awarding parent institution. In particular, AMC places paramount importance on obtaining accreditation by relevant UK regulatory bodies such as, for example, the Royal Institute of British Architects (RIBA) and the Architecture Registration Board (ARB) (application in progress). For a full list of programmes and international partners please refer to Appendix II. Furthermore, in 2012 and responding to a considerable gap in the Greek educational landscape, AMC successfully expanded in the areas of Engineering and Architecture, thus becoming the first private educational institution to offer Engineering education in Greece. Although AMC is a teaching institution *par excellence*, its staff members are also active in research activities with a strong presence in national and international conferences as well as scholarly contributions in top scientific journals. Furthermore, they regularly organise guest lectures, talks, seminars and conferences where staff research results and achievements are presented and discussed. To consolidate the research interests of the staff, AMC has taken the necessary steps to formally incorporate research into its educational programme by establishing a Research Unit which is dedicated to cutting-edge research and innovation. The Research Unit aims to fully utilize the extensive expertise and research potential of the AMC faculty which represents a substantial talent pool. The main purpose of the Unit will be the production of knowledge through the research activities of staff, but also students, with a view to increase impact on the scientific community and society at large. It is also envisaged that joint research projects will be undertaken with our partner HEIs and initial discussions have already taken place to offer joint supervision of PhD programmes in carefully selected areas of research. Furthermore, the establishment of AMC's Collaborative Research Ethics Committee (CREC) constitutes an integral part of the procedure for establishing a Research Unit under the remit of the College's Academic Services within the existing Quality Unit.

6. STUDENT SUPPORT SERVICES

Throughout their studies, AMC students benefit from various support services, which improve their academic performance, allow them to gain better employment prospects and maximize their student experience. Our highly-experienced staff is there to share their passion for their subject, provide students with the best possible learning experience and make their time at AMC memorable. Staff generally maintain an open-door policy towards students or have their office hours posted on their office door; when not available personally, staff can always be contacted by e-mail and are expected to respond to students within a predetermined timeframe. Students are provided with a comprehensive induction programme upon entry which includes an introduction to facilities, support services, orientation, programme structure, regulations and timetabling. In addition, during the induction process, students are assigned a personal tutor. The Personal Academic Tutor is one of the fundamental factors supporting the learning process at AMC. Students have direct contact with their Personal Academic Tutor in terms of their academic performance, their employment prospects and, in general, any issue related to their educational progress. The Personal Academic Tutor contributes to the resolution of any problem that might possibly arise during the period of study and supports the students when the time comes to find the most appropriate professional option for their future.

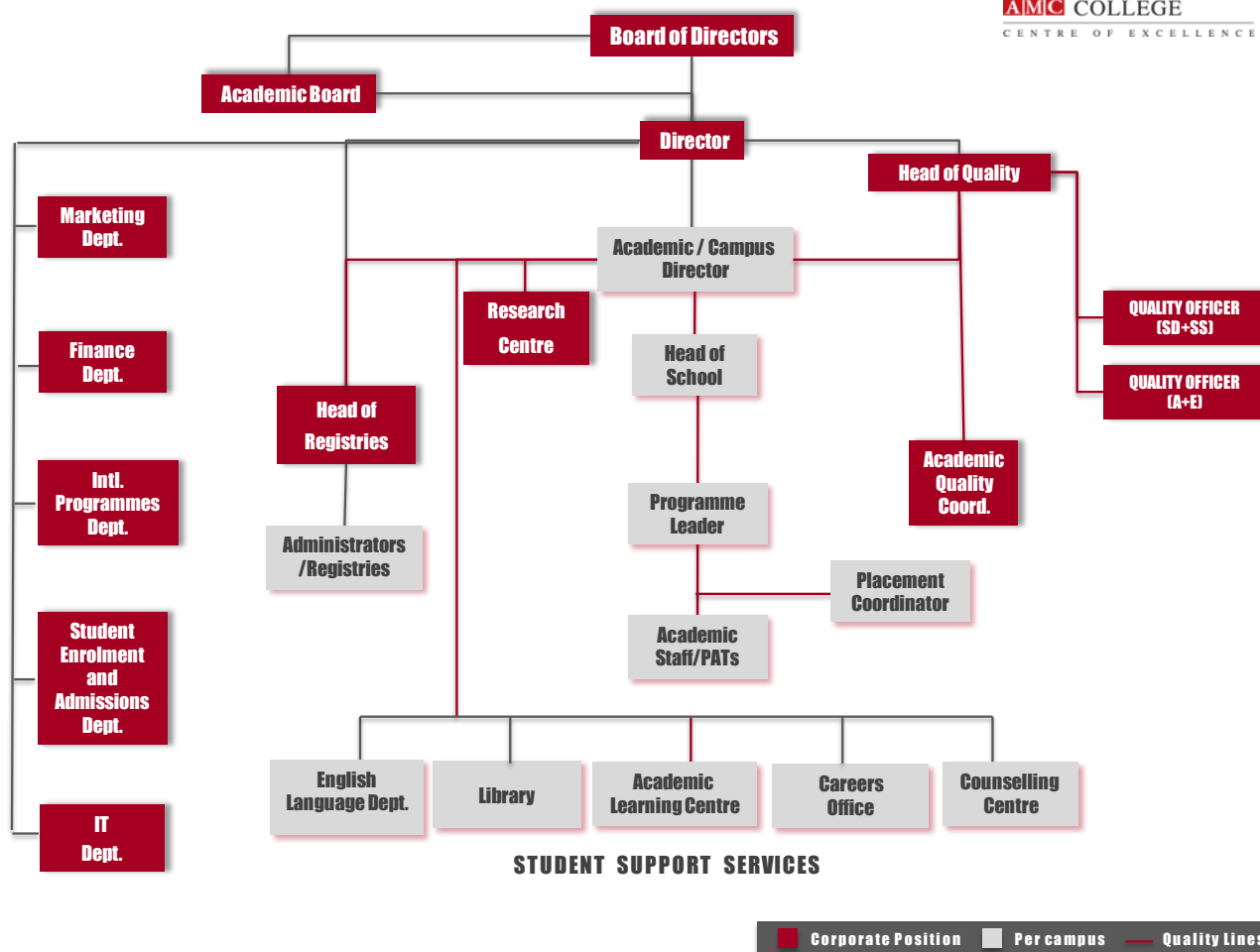
Where necessary, students may also be referred to additional support services such as counselling. AMC's Counselling Centre aims at optimising the well-being of students by providing them with advice and support. Students are also supported by the Academic Learning Centre, which offers a unique, friendly, student-centred service, thus providing an intellectually stimulating approach to developmental instruction as well as academic assistance to students who need extra help with their studies. The Academic Learning Centre offers assistance to students in many and multifaceted learning tasks, especially in terms of improving their academic writing and study skills, understanding research projects and research procedures, one-on-one paper consultation, exam preparation, academic honesty, avoiding plagiarism and ways of handling paraphrasing and citations.

AMC has heavily invested in its virtual learning environment. One of the most valuable and useful supportive tools at AMC is MOODLE, a modern e-learning platform designed with a range of tools to fully support students' studies and academics' work. The academic staff of AMC strongly encourages and supports student participation in research projects. The participation in national and international research projects is a unique opportunity for our students to actively contribute to and work on a research project, with the guidance of their lecturers. AMC also organises training seminars, scientific conferences and career-development workshops for each area of study throughout the academic year, while it strongly encourages students to actively participate in such events. The main aim of these activities is to help students hone their skills and prepare them for their professional journey using both their academic and personality qualities.

AMC ensures that employability of the students is at the heart of its educational programmes. In the majority of these programmes, professional practice is necessary to allow students to complete successfully their studies and graduate but, most importantly, to get a better understanding of real working conditions and market demands. Professional practice at AMC is organised in cooperation with top companies/institutions in Greece in each field, and is often the starting contact point for the graduates' future professional career. AMC has developed strong links with the employment market, in order to ensure its graduates' fast integration into the professional sector of their choice. Every year, after successfully cooperating with the AMC Career Office, many national and multinational companies seek to recruit AMC graduates.

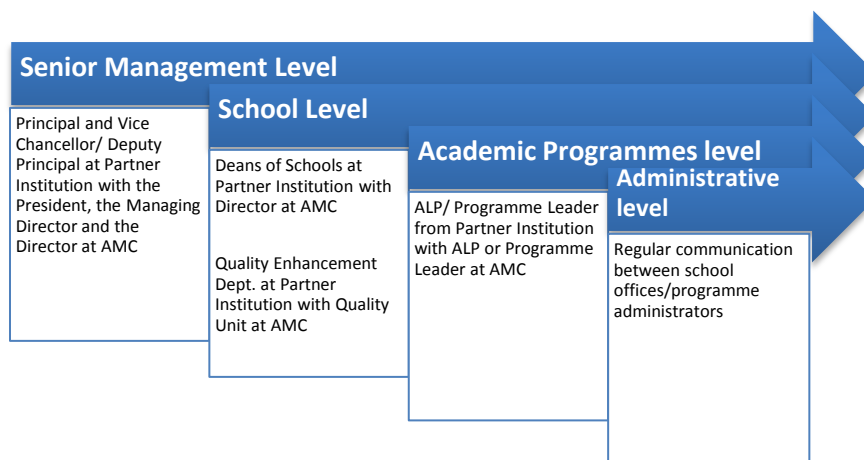
7. GOVERNANCE AND MANAGEMENT

AMC is run by the Chairman, the Board of Directors and the College Director. The latter is responsible for planning, establishing academic and industry links and taking decisions for the College staff and student welfare. All decisions and proposals go through the Board of Directors which is responsible for the approval or rejection of such proposals. The Chairman finalises decisions and authorises contracts and agreements after receiving advice on strategic and academic matters from the Chairman of the Academic Board following recommendations by the Board members.



The high quality of AMC's academic work is approved by the Academic Board which consists of very senior academics with management experience at the highest level in British Universities (*see APPENDIX I*). The role of the Academic Board is to offer advice to the Chairman of the Board of Directors on all matters related to academic strategy, policy and future academic direction. Programmes are run by skilled Programme Leaders who are responsible for the smooth running of the programme and manage and coordinate the day-to-day activities. They are supported by experienced Year Coordinators, Module Leaders and Personal Academic Tutors. In larger Departments, an Academic Link Person is responsible for overseeing the Programme Leaders in order to ensure quality standards and consistency. Each Faculty is headed by an outstanding academic with overall responsibility for all programmes in their area. Figure 1 provides more details.

Figure 1: Communication lines at AMC



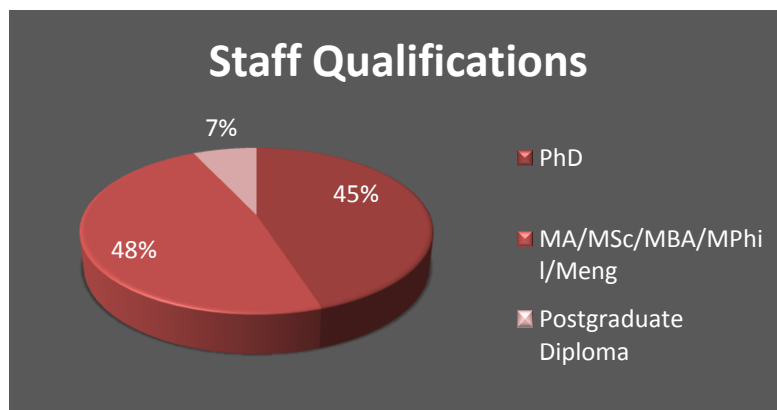
Academic staff at AMC consists of full-time and part-time lecturers (at a ratio of 3:1) as well as visiting lecturers including several distinguished specialists in every field of study. All members of academic staff who are carefully selected by the AMC management in collaboration with the parent institution share the College's vision and beyond being outstanding professionals, leading academics and experienced researchers, are also inspiring teachers who help students progress and develop their talents and capabilities.

8. TEACHING STAFF

AMC as a small and friendly institution has a competitive advantage in terms of the staff/student ratio: 1 member of staff corresponds to about 11 students in Thessaloniki and to 13.5 students in Athens. We are very proud of this student/staff ratio especially in light of the UK university average ratio of 1 staff member for every 17.5 students.

AMC has significantly invested in building excellent teams of academics who have a proven track record as teachers with a positive, inspiring, and long-lasting effect on students and their learning. Some 90% of the academic staff members have undertaken postgraduate studies, while 34% hold doctorate degrees/PhDs (see Figure 2 below). Most have studied at either undergraduate or postgraduate level in the UK, while they all have extensive teaching experience and are keen to update or broaden their knowledge, not least through the College's continuous professional development (CPD) scheme.

Figure 2: Highest Qualification Held by Academic Staff (Athens and Thessaloniki)



9. QUALITY ASSURANCE & ENHANCEMENT

AMC aims at enhancing its position as a leading provider and a provider of choice of higher education in a broad range of academic and professional disciplines by delivering high quality programmes in a nurturing atmosphere where quality is always dictated by the drive for excellence and the commitment to the principles of transformational education. Special emphasis is placed on academic quality and the College structure is such that ensures the highest standard of academic provision, educational discipline, quality and professional relevance.

Partnerships and collaborations with UK universities are managed in adherence to Chapter B10 of the UK Quality Code for Higher Education developed by the Quality Assurance Agency (QAA), which includes directions on how collaborative provisions should conduct activities such as moderation of assessment, external examiners relationships and staff development.



It is of utmost importance that AMC has received positive commendations by QAA, following the Agency's latest review in 2015 of its two main collaborations with UK Universities. More specifically:

- AMC's collaboration with the University of East London
<http://www.qaa.ac.uk/en/ReviewsAndReports/Documents/University-of-East-London-AKMI-MC-TNE-15.pdf>
- AMC's collaboration with Queen Margaret University
<http://www.qaa.ac.uk/en/ReviewsAndReports/Documents/Queen-Margaret-AKMI-MC-TNE-15.pdf>

There is a dedicated Quality Unit at AMC which aims at developing and managing the quality assurance and enhancement mechanisms of the College, including course planning and approval (validation) in collaboration with our partner UK HEIs, periodic reviews and annual evaluation processes. The Quality Unit also supports the

Collaborative Research Ethics Committee as well as various Assessment Boards and Partnership Committees. The Unit also ensures staff understanding of the College's underpinning educational philosophy, procedures and processes, including providing support and guidance particularly related to collaborative provision and information and training related to quality assurance and enhancement activities.

The Quality Unit monitors, evaluates and improves all components of the educational process as well as the administrative services offered to students and aims at instilling a quality ethos with a sense of ownership and accountability in its academic community. AMC has a variety of both formal and informal quality assurance mechanisms at all levels, involving staff and students, in order to ensure that there is a continuous process of quality assurance rather than a static procedure which takes place at particular periods of time. Focus on development and improvement plans as a result of periodic reviews is at the heart of the quality process at AMC.

In order for AMC to provide quality in education and to enhance student experience, it pays special attention to student voice. Students actively participate in Programme Committee Meetings and each programme has a student representative. Their views are incorporated in the annual review reports and taken into consideration when designing the action plans. Students also complete Student Feedback Questionnaires and, again, their results are considered at all levels of the quality assurance process.

AMC's commitment to quality is certified by its accreditation by the British Accreditation Council (BAC) as an independent institution offering higher education and all academic degrees are recognized by the UK NARIC.

Furthermore, AMC actively seeks to keep track of the latest news and international developments in each academic field and to offer its academic staff the opportunity to take part in training sessions, scientific congresses and events in order to further enhance their knowledge and experience. In that framework, AMC is member of recognised international associations in the Health sector, such as the European Network of Physiotherapy in Higher Education (ENPHE), the British Association for Counselling and Psychotherapy (BACP) and the European Network of Occupational Therapy in Higher Education (ENOTHE), while the undergraduate Psychology programme is BPS-accredited as of 2015. Insofar as Architecture is concerned, AMC has been validated for RIBA (Royal Institute of British Architects) Part 1, while it is also in the process of applying to the ARB (Architecture Registration Board) for Prescription for Part 1.

10. BRIEF SUMMARY OF BUSINESS AND FINANCIAL MODEL

AMC is the fastest growing private College in Athens with more than doubling its student population within the last two years. This is a significant accomplishment given the fact that this period accounts for the time when the financial crisis in Greece reached its peak. AMC also enjoys a healthy and steady development in the number of programmes offered; Figures 3 and 4 below graphically indicate this trend.

Figure 3: Growth in Student Numbers

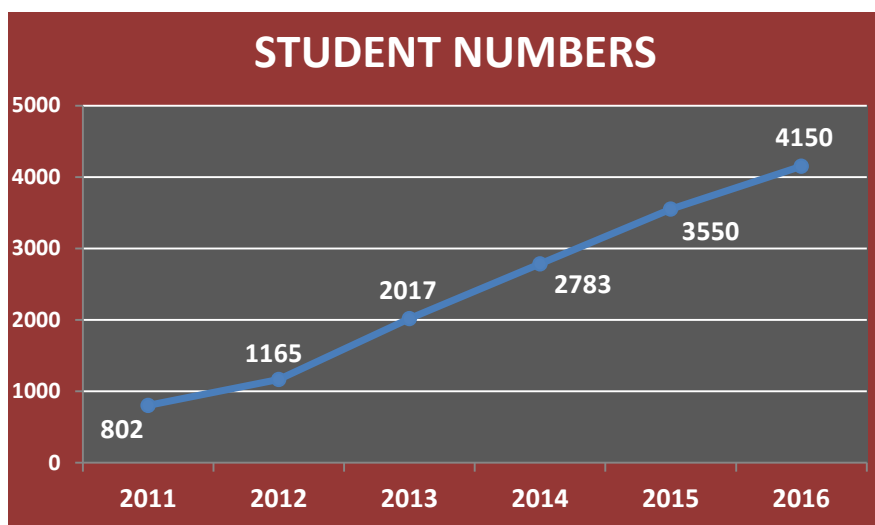
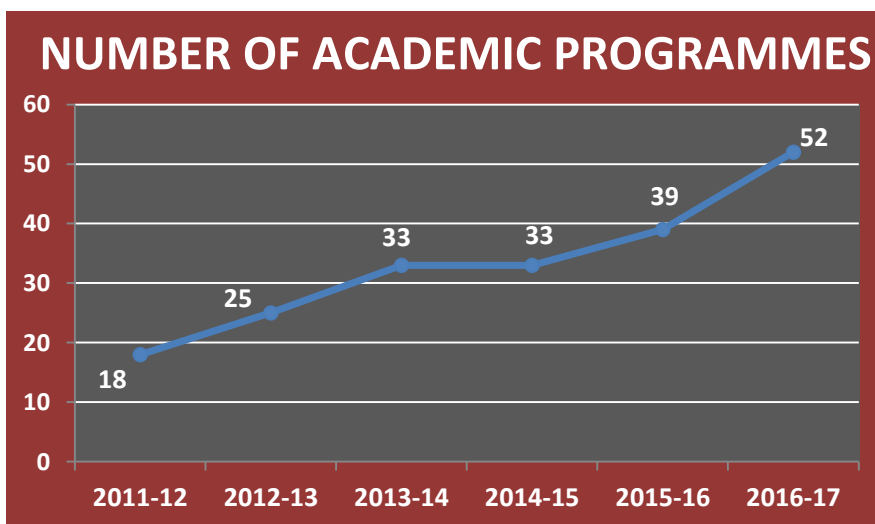


Figure 4: Growth in the Number of Academic Programmes



The main source of funding is student tuition fees which are carefully handled to ensure the sustainability of the College's academic activities and careful investments so as to guarantee a teaching and learning environment of the highest standards. AMC is a financially sound institution as can be seen in its audited balance sheets, with a clear vision and strategy of expansion. It is worth mentioning that all the AMC's infrastructure (including campuses, laboratories, buildings, etc) is privately owned, removing any financial uncertainty from any present and future potential collaboration. AMC's continuous commitment to the establishment and improvement of our infrastructure constitutes an integral part of our strategic development agenda.

AMC aims at maintaining and further enhancing its well-established position in the fields of study by gradually expanding at both national and international level. With respect to the national level, AMC introduces new programmes of study in professional areas of high-demand, thus responding to the expectations of both students and of an ever-changing and more diverse employment market. At the international level, AMC's expansion plans include the establishment of new academic collaborative agreements with top European Universities and the undertaking of joint research projects with our partners.

11. CORPORATE & SOCIAL RESPONSIBILITY (CSR)

Due to its leading position in the Greek educational landscape, AMC views Corporate Social Responsibility as an issue of paramount importance. The current financial crisis that Greece is facing only serves to strengthen our resolution to support those who have been most afflicted. Thus, during the past few years, our CSR activities have become a substantial part of our strategic agenda. In particular, AMC has been working closely with the social services of the local municipal councils (Maroussi & Thessaloniki) and has been providing free care and support to numerous citizens. This effort has been spearheaded by our Health & Humanities Faculties (Speech and Language Therapy, Psychology, Physiotherapy, Special Needs etc). Our highly experienced academic staff, many of whom are also active practitioners, in collaboration with our students, have been providing much needed support, guidance and treatment to those who need it most.

12. MEMBERSHIPS / ACCREDITATIONS



AMC is **Member of** recognized national and international educational organizations and associations such as:

- Compostela Group of Universities (www.gcompostela.org)
- The European Network of Physiotherapy in Higher Education (ENPHE) (www.enphe.org)
- The European Network of Occupational Therapy in Higher Education (ENOTHE) (www.enothe.eu/index.php?page=about/en/default)
- The ARM University Program (www.arm.com/support/university)
- European Dyslexia Association (www.eda-info.eu)
- The British Association for Counselling and Psychotherapy (BACP) (www.bacp.co.uk)
- SAP University Alliances (www.sap.com)

- CISCO Networking Academy (www.netacad.com)
- Greek Tourism Confederation (SETE) (<http://sete.gr/en/>)
- Greek Association for Counselling (GAC) (<http://hac.com.gr/index.php?lng=2>)
- The Forum on Education Abroad (www.forumea.org)
- The Hellenic College's Association (www.hca.gr)



The Chartered
Institute of Logistics
and Transport



The British
Psychological Society
Accredited

AMC is also **Accredited** by international organizations and associations such as:

- The British Accreditation Council (BAC) (www.the-bac.org)
- The Royal Institute of British Architects (RIBA) (www.architecture.com)
- The Chartered Institute of Logistics and Transport (CILT) (www.ciltuk.org.uk)
- The Institute of Biomedical Science (IBMS) (www.ibms.org)
- The British Psychological Society (BPS) (www.bps.org.uk)

13. INSTITUTIONAL PARTNERSHIPS

All academic courses of Metropolitan College are offered in the Athens, Maroussi, Piraeus and Thessaloniki campuses, always in collaboration with distinguished public UK Universities. Metropolitan College is currently collaborating with the following UK Universities:



University of London
International Programmes



Moreover, in May 2016 AMC signed a **new international partnership with Peter the Great St. Petersburg Polytechnic University (SPbPU) in Russia**. The twinning of the two educational institutions was initiated through the establishment of 2016 as “Year of Cultural Partnership” between Greece and Russia, with a view to strengthening cultural and educational relations between the two countries.

The cooperation between the two institutions covers all educational issues related to the **exchange and sharing of knowledge between students and academic staff**. More specifically, the two institutions agreed to explore internal and external opportunities for collaboration in education, training, research and exchange of students and staff, as part of their international activities.



APPENDIX I

ACADEMIC BOARD

AMC's Academic Board consists of the following distinguished academics:

- ▶ **Professor Dinos Arcoumanis FEng, Chairman**
Former Deputy Vice-Chancellor, City University London
Former Ambassador of Greece for Energy Policy
Director & Member of the Board of the Angelicoussis Shipping Group
Fellow of the Royal Academy of Engineering

- ▶ **Professor David Rhind CBE FRS FBA, Member**
Former Director General of Ordnance Survey
Former Vice-Chancellor, City University London
Former Member of the Board of Directors, Bank of England
Former Chairman of UK Statistics Commission
Fellow of the Royal Society
Fellow of the British Academy

- ▶ **Mr Nicky Pappadakis, Member**
Chairman, A.G. Pappadakis & Co. Ltd
Chairman of Malta International Shipping Council
Member of Board of Directors, Maritime Authority of the Cayman Islands
Chairman Emeritus and Past-Chairman of Intercargo
Former Member of the Board of Directors Union of Greek Shipowners

- ▶ **Professor Sir Drummond Bone, Member**
Master of Balliol College, University of Oxford
Chairman of the UK Arts and Humanities Research Council
Former President of Universities UK
Former Vice-Chancellor, Liverpool University
Former Principal of Royal Holloway College

- ▶ **Mr Constantinos Rodopoulos, Member**
Chairman of AKMI EDUCATIONAL GROUP

- ▶ **Mr Dimitrios Diamantis, in attendance**
Director of Metropolitan College

APPENDIX II

LIST OF PROGRAMMES

UNDERGRADUATE PROGRAMMES	
FACULTY OF BUSINESS AND ECONOMICS	<ul style="list-style-type: none"> • BA (Hons) Business Management • BSc (Hons) Economics for Business • BA (Hons) Marketing Management
FACULTY OF TOURISM	<ul style="list-style-type: none"> • BA (Hons) International Hospitality and Tourism Management • BA Culinary Arts and Food Service Development • BA Culinary Arts, Baking and Patisserie
FACULTY OF SHIPPING	<ul style="list-style-type: none"> • BSc (Hons) Maritime Business • BSc (Hons) Shipping and Port Management
FACULTY OF COMPUTING	<ul style="list-style-type: none"> • BSc (Hons) Computing • BSc (Hons) Computer Networks
FACULTY OF HEALTH SCIENCES	<ul style="list-style-type: none"> • BSc (Hons) Logopaedics • BSc (Hons) Physiotherapy • BSc (Hons) Biomedical Sciences • BSc (Hons) Dietetics • BSc (Hons) Occupational Therapy • BSc (Hons) Sports Coaching • BSc (Hons) Nursing
FACULTY OF HUMAN SCIENCES	<ul style="list-style-type: none"> • BSc (Hons) Psychology • BA (Hons) Early Childhood Studies • BA (Hons) Special Education
FACULTY OF ARCHITECTURE, ENGINEERING AND THE BUILT ENVIRONMENT	<ul style="list-style-type: none"> • BA (Hons) Architecture (RIBA part 1) • BEng (Hons) Civil Engineering and Construction • BEng (Hons) Electrical and Electronic Systems • BEng (Hons) Mechanical Engineering and Manufacturing
FACULTY OF CULTURE AND COMMUNICATION	<ul style="list-style-type: none"> • BA in Media Production - Journalism • BA in Media Production - Film Directing • BSc (Hons) Music Technology
UNIVERSITY OF LONDON INTERNATIONAL PROGRAMMES	<ul style="list-style-type: none"> • Bachelor of Laws (LLB) • BSc (Hons) Economics • BSc (Hons) Politics and International Relations

POSTGRADUATE PROGRAMMES	
FACULTY OF BUSINESS AND ECONOMICS	<ul style="list-style-type: none"> • MBA • MBA International Business
FACULTY OF TOURISM	<ul style="list-style-type: none"> • MBA in Hospitality
FACULTY OF COMPUTING	<ul style="list-style-type: none"> • MSc Software Engineering • MSc Information Technology • MSc Information Security and Computer Forensics
FACULTY OF HEALTH SCIENCES	<ul style="list-style-type: none"> • MSc Physiotherapy • MSc Advanced Dietetic Practice
FACULTY OF HUMAN SCIENCES	<ul style="list-style-type: none"> • MA Special Educational Needs (SEN) • MSc Clinical and Community Psychology • MSc Business Psychology • MSc Applied Positive Psychology and Coaching • MSc Psychology (conversion course) • MA Counselling and Psychotherapy • Postgraduate Certificate Learning and Teaching in Higher Education
FACULTY OF ARCHITECTURE, ENGINEERING AND THE BUILT ENVIRONMENT	<ul style="list-style-type: none"> • MArch Architecture and Urbanism • MSc Civil Engineering and the Built Environment • MSc Electrical Engineering and Computer Systems • MSc Electronic Systems Engineering • MEng Mechanical Engineering and Manufacturing